



Flat C Howard House

Penge, SE20 8HH

£1,550 PCM

Welcome to Howard House in the charming area of Penge, SE20. This delightful top floor flat boasts a spacious open plan kitchen and living area, perfect for entertaining guests or relaxing after a long day. With two double bedrooms, this property offers ample space for a small family, a couple, or even someone looking for a home office.

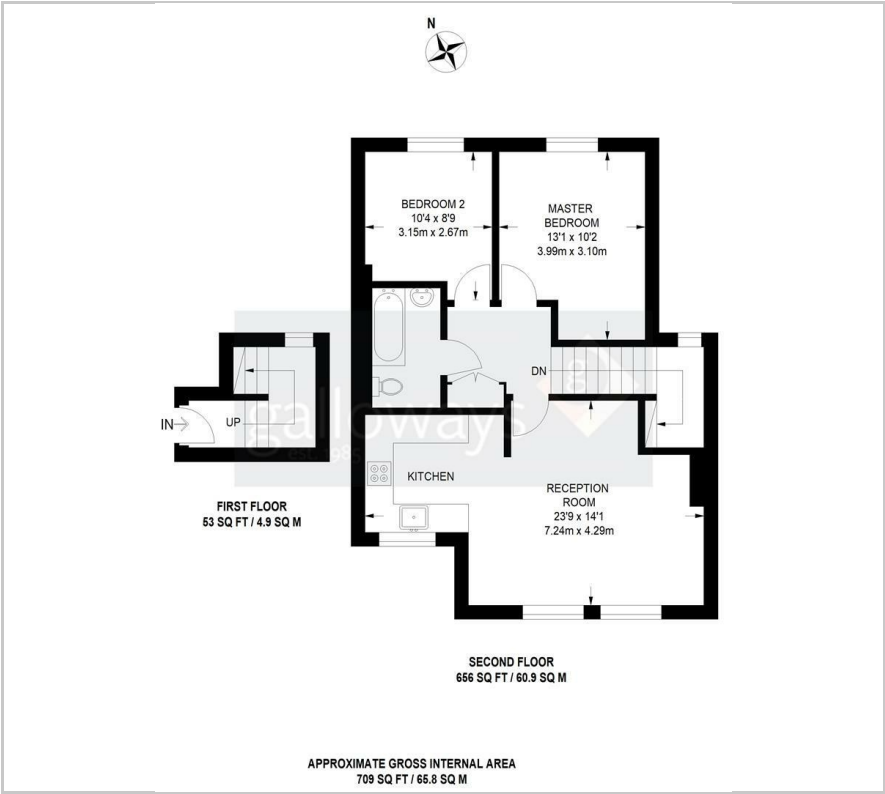
Situated on a peaceful residential street, Howard House provides a tranquil environment away from the hustle and bustle of the city.

Viewing

Please contact our Galloways Penge Office on 020 8778 1120 if you wish to arrange a viewing appointment for this property or require further information.

- TWO DOUBLE BEDROOM FLAT
- TOP FLOOR
- OPEN PLAN KITCHEN AND LIVING AREA
- GAS CENTRAL HEATING
- NEUTRALLY DECORATED
- DOUBLE GLAZED
- COMMUNAL GARDEN
- 13 MINUTE WALK TO PENGE EAST STATION
- 14 MINUTE WALK TO PENGE WEST STATION
- (ALL WALKING DISTANCES ARE ESTIMATED VIA GOOGLE MAPS)

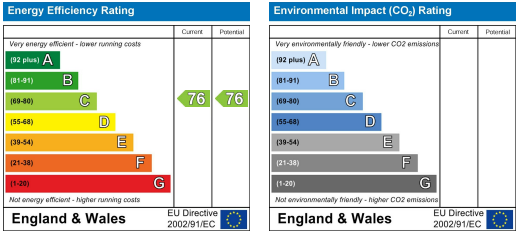
Floor Plan



Area Map



Energy Efficiency Graph



These particulars, whilst believed to be accurate are set out as a general outline only for guidance and do not constitute any part of an offer or contract. Intending purchasers should not rely on them as statements of representation of fact, but must satisfy themselves by inspection or otherwise as to their accuracy. No person in this firm's employment has the authority to make or give any representation or warranty in respect of the property.